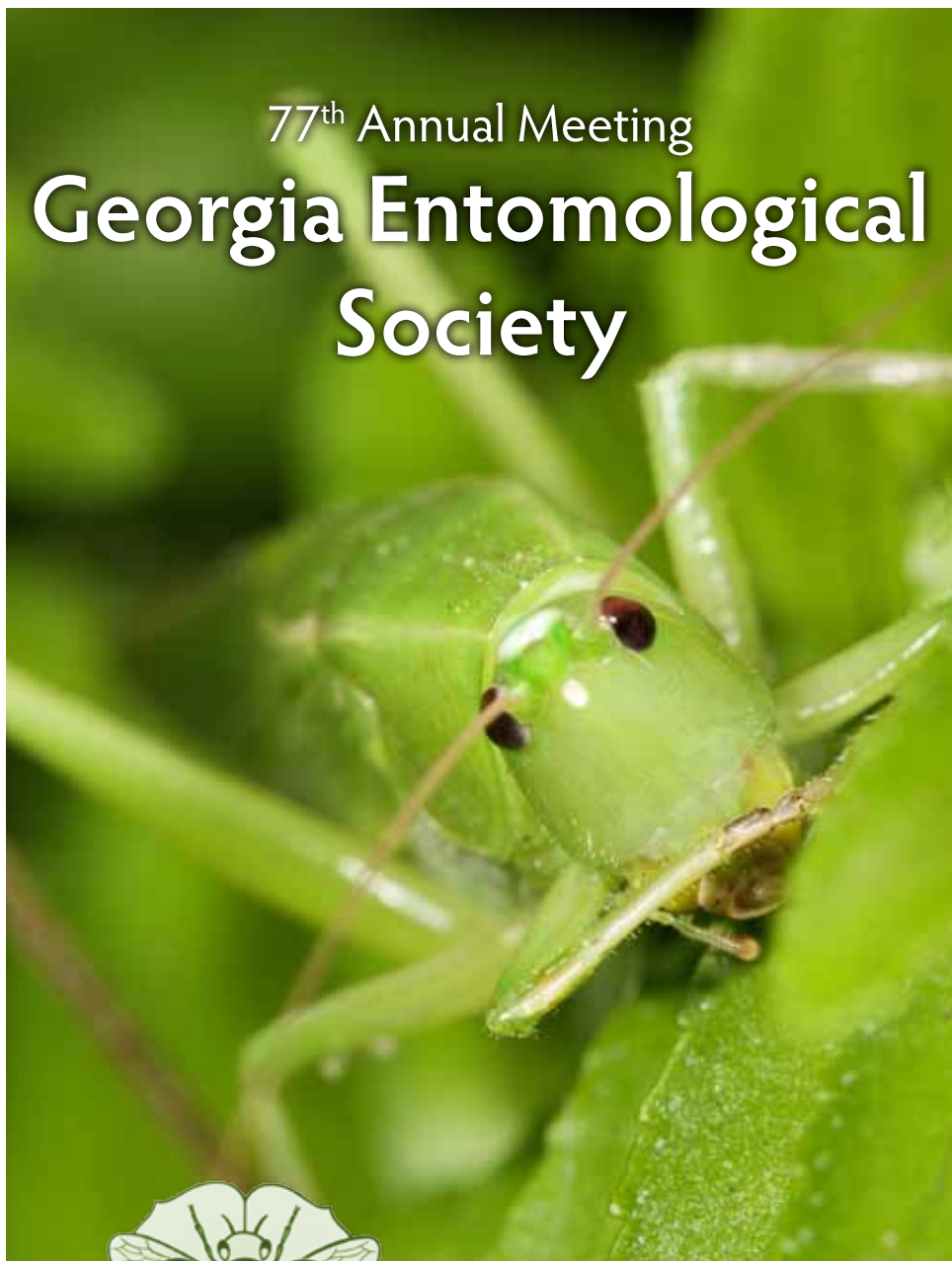


77th Annual Meeting
**Georgia Entomological
Society**



10 – 12 April, 2013

Amicalola Falls State Park
Dawsonville, Georgia



PRESIDENT • 2012-2013

Alan Harvey

Greetings, and welcome to the 77th meeting of the Georgia Entomological Society, and the first to be held in fabulous Amicalola Falls State Park! We have a full slate of nearly 60 presentations from professionals and students alike. Come early for the annual Bug Run/Walk, which is likely to be exceptionally beautiful (and invigorating!). Thursday will be a particularly action-packed day. In the morning, Dave Buntin will present the Founder's Lecture honoring Wayne Gardner. This is an

especially appropriate pairing given that Wayne is passing the editorial torch to Dave, as he retires from his remarkable 19-year tenure as Editor of the *Journal of Entomological Science*. Thanks to Wayne's tireless efforts, the *Journal* has enjoyed a top-notch reputation in the area of applied entomology. Although it's hard to imagine anyone filling Wayne's shoes, we are fortunate that Dave, the *Journal's* long-time Associate Editor, will be taking over as Editor, ensuring a smooth transition. This year's Fellows awards will be presented to Tracie Jenkins and Kristine Braman, who have had spectacular success in their quite different approaches to applied entomology. After the Industry Panel, Program Chair and President-Elect Gerald Harrison will introduce this year's Special Symposium "Industry: your partner in seeking and providing solutions for management of destructive and annoying insect pests." The Luncheon and Photo Salon (which will again include the popular "people's choice" award) will be followed by the Master's and PhD student paper competitions. Student awards will be announced after the first round of contributed papers and before the evening GES mixer. And there's more on Friday, with additional contributed papers and the business meeting. I'd like to thank the participants, volunteers, and industry sponsors who collaborate year in and year out to make these meetings uniquely valuable and enjoyable!

Alan Harvey is a Professor in the Department of Biology at Georgia Southern University. Alan received his undergraduate degree in Biological Sciences from Stanford University and his PhD in Ecology and Evolutionary Biology at the University of Arizona. He has been at Georgia Southern since 1998, where he works on diverse aspects of evolutionary ecology. His entomological interests include ant-plant protective mutualisms and the behavior and ecology of larval tiger beetles.



SCHEDULE OF EVENTS

Wednesday, 10 April 2013

- 4:00-6:00 P.M. Registration (Downstairs Lobby)
- 5:00 P.M. Entomology Run/Walk with John All (Meet in Lodge Lobby)
- 6:30-7:30 P.M. Executive Committee, Beech Room

Thursday, 11 April 2013

- 7:00 - 8:00 A.M. Breakfast Buffet (Maple Restaurant)
- 7:00 - 8:30 A.M. Registration (Downstairs Lobby)
- 7:00 - 8:30 A.M. Poster Set Up (Chestnut Oak Room)
- 8:30 - 5:00 P.M. Poster Displays (Chestnut Oak Room)
- 8:00 - 8:15 A.M. Welcome and Announcements (Red and White Oak Rooms)
- 8:15 - 8:45 A.M. 2013 Founders Lecture (Red and White Oak Rooms)
- 8:45 - 9:00 A.M. Recognition of 2013 GES Fellows (Red and White Oak Rooms)
- 9:00 - 9:45 A.M. Industry Panel (Red and White Oak Rooms)
- 9:45 -10:00 A.M. Break
- 10:00 - Noon Symposium (Red and White Oak Rooms)
- Noon - 1:15 P.M. Luncheon & Photo Salon (Foyer and Meeting Room)
- 1:15 - 3:05 P.M. B.S./M.S. Student Paper Competition (Red and White Oak Rooms)
- 3:05 - 3:30 P.M. Break
- 3:30 - 4:00 P.M. Ph.D. Student Paper Competition (Red and White Oak Rooms)
- 4:00 - 5:10 P.M. Contributed Papers (Red and White Oak Rooms)
- 5:10 - 5:30 P.M. Student Awards Presentations (Red and White Oak Rooms)
- 6:00 - 7:00 P.M. GES Mixer (Downstairs Lobby)

Friday, 12 April 2013

- 7:00 - 8:00 A.M. Breakfast Buffet (Maple Restaurant)
- 7:00 - 8:00 A.M. Registration (Downstairs Lobby)
- 8:00 - 11:30 A.M. Poster Displays (Chestnut Oak Room)
- 7:30 - 8:00 A.M. Authors at Posters
- 8:00 - 9:30 A.M. Contributed Papers (Red and White Oak Rooms)
- 9:30 - 9:45 A.M. Break (Red and White Oak Rooms)
- 9:45 - 10:55 A.M. Contributed Papers (Red and White Oak Rooms)
- 11:00 - 12:00 P.M. Business Meeting





FOUNDER HONOREE • 2013

Wayne Gardner

Wayne Gardner first joined the Georgia Entomological Society as a Student Member in the mid-1970s while he was earning his Ph.D. in Entomology at Clemson University. He joined the faculty at the University of Georgia in 1979 and immediately became

more involved with the Society and its flagship publication, *The Journal of the Georgia Entomological Society*. Wayne was serving as a Subject Editor on the Journal's Editorial Board in 1985 as it transitioned to its current title, *Journal of Entomological Science*. Other changes made at that time included a shift to a different binding, a new colorful and attractive cover with an alternating theme photo for each issue, and a change in management and review of submitted manuscripts. The Society leadership asked Wayne to serve as Business Manager for the Journal in 1988, a role in which he served until 1993 when he was named as Editor.

Wayne will be stepping down as Editor this year, marking the end of 25 consecutive years he has served the *Journal of Entomological Science* as either Business Manager or Editor. During his service as Editor, he has overseen the review of 1,393 submitted manuscripts and managed the publication of 1,143 scientific articles and notes compiled in 10,058 printed pages in 82 issues and 2 supplements. He also oversaw and guided the move to Dartmouth Journals - Sheridan Press as a publisher for the Journal, the inclusion of color images and figures, and the use of electronic portable document format for reprints of published articles. Wayne also served as President of the Society in 2004-2005 and was honored as a GES Fellow in 2006.

Wayne is a native North Carolinian, having grown up in the small town of Mebane (population ~2,000) in Alamance County. At that time, Mebane was well-known for its production of quality furniture and as a leading tobacco market for surrounding flue-cured tobacco producers. It has since become a major 'bedroom community' for UNC, Duke, and the Research Triangle. Wayne attended the local public schools, graduating from Eastern Alamance High School in 1967. He earned his B.S. in Biological Sciences at East Carolina University in Greenville, North Carolina, in 1971. His undergraduate studies were first in history - a subject that continues to interest him - but he soon changed to biology as a major as he became increasingly interested in the ecology of the salt marsh and estuarine systems in coastal North Carolina where East Carolina is located.

Wayne actually taught a year of high school biology, chemistry and physics in Bath, North Carolina, just after graduation. Bath is located on the Pamlico River where it empties into the Pamlico Sound, and it is likely best known as a former home of Edward Teach, aka 'Blackbeard the Pirate'.



After that year, he returned to graduate school to earn his M.S. in Biological Sciences from East Carolina in 1974 under the direction of Susan McDaniel and his Ph.D. in Entomology from Clemson University in 1977 under the direction of Ray Noblet. After serving one year in a postdoctoral position at Clemson, Wayne was hired as an Assistant Professor of Entomology with the University Georgia at the Georgia Agricultural Experiment Station in Griffin, Georgia. He frequently acknowledges the counsel and guidance that his former mentor, Dr. Ham Tippins, provided to him as he progressed through the academic ranks of Associate Professor and to Professor.

His research responsibilities and duties have varied over his 34 years at the University of Georgia. He first worked in sorghum, corn, and small grains on the management of a variety of lepidopteran pests including *Elasmopalpus lignosellus*, *Spodoptera frugiperda*, *Helicoverpa zea*, and *Heliothis virescens*. In this stage of his career, he maintained an active, but small, effort in the microbial control of insects - an interest that was sparked in a mycology course at East Carolina University and developed further in his dissertation research at Clemson University. He was eventually allowed the freedom to explore microbial control across commodity lines. That led him first into the augmentation of naturally-occurring *Nomuraea rileyi* in lepidopteran pest populations in soybean and eventually into work with entomogenous viruses, nematodes, bacteria, and other fungi against various other pests including scarabaeid grubs, lepidopteran larvae, aphid pests, and the pecan weevil. His current research efforts include the development of entomogenous fungi and nematodes for management of the pecan weevil, imported fire ant management, and the biology and management of the invasive plataspid, *Megacopta cribraria*.

Wayne also has served the University in several administrative roles. He has served as administrative coordinator of the entomology unit on the Griffin Campus since 1991, was interim department head for Entomology in 1996-1997, interim coordinator of the newly-formed Georgia Center for Urban Agriculture in 1998, and has served as coordinator for the UGA Griffin Campus Research and Education Garden since 1998. He also served on the Governing Board of the Entomological Society of America 2001-2004 and as President of the Southeastern Branch of the Entomological Society of America 2005-2006.

Wayne and Cathy (B.S., M.S. East Carolina University; Ph.D. University of Georgia), his wife of 42+ years, live in Griffin, Georgia. Cathy serves on the faculty of the Tift College of Education of Mercer University where she is in science education. They have two grown children - Greg and Mary Melissa. Both are married and are attorneys in Washington, DC. Wayne and Cathy have no grandchildren at this time, but they thoroughly enjoy their three granddogs - Rosemary, Colby, and Ramona.



FOUNDERS' LECTURER • 2013

G. David Buntin

Dr. Buntin is a Professor of Entomology, at the University of Georgia, College of Agricultural and Environmental Sciences, Griffin campus, in Griffin, GA. He received his B. S. degrees in Entomology and Applied Ecology from University of Delaware in 1978, and his M.S. (1980) and Ph.D. (1984) in Entomology from Iowa State University.

Since 1984, he has been a faculty member of the Department of Entomology at the University of Georgia. Dr. Buntin conducts research in the area of applied insect biology and the development of arthropod pest management programs for grain and forage crops. He also has extension programming responsibilities for insect pests of grain crops and in 2005 began teaching IPM and General Entomology as part of undergraduate degree programs in Biology and Environmental Sciences at the UGA-Griffin campus.

He has conducted extensive work on the Hessian fly and other insect pest of cereal grains. This work has used to develop an integrated crop management program for winter wheat in Georgia that has minimized loss by insect pests. He also works closely with a team of scientist at UGA to develop high-yield, adapted cereal grain cultivars with good levels of pest resistance. Over the last decade Dr. Buntin has conducted work to develop and implement effective management of insect pests of cereal grains, corn, and grain sorghum. Work on corn has focused on the evaluation of new systemic insecticide seed treatments and on the use of transgenic corn containing Bt toxins for control of lepidopteran pests. His also has worked to develop effective management options for insect pest control of new, alternative grain crops most notably winter canola and pearl millet.

Dr. Buntin was a student member from 1978 - 1984 and has been a member of ESA since 1984. He has served on and been chair of the editorial board of the Journal of Economic Entomology, member of the section F program committee and organizer of a number of conferences and sessions at the national meetings. He also has been member and chair of the membership committee and program chair for the 1992 and 2006 Southeastern Branch meetings. He is active in and past president of the Georgia Entomological Society and the SE branch of ESA. He also served as a subject editor for JEE, subject editor for Pest Management for Agronomy Journal and associate editor for the Journal of Entomological Sciences. He will assume duties as Editor of the Journal of Entomological Science in 2013.





FOUNDERS' LECTURE SERIES

The Georgia Entomological Society recognizes significant and selfless contributions to science and the GES by means of the GES Founders' Lecture Series, a program that the society began in 1990. The Founders' Lecture serves to honor the individual to whom the lecture is dedicated, and additionally serves to recognize a scholar/researcher of the Society who has contributed significantly and historically to the advancement of our science and/or whose research is at the cutting edge of his/her subdiscipline.

Year	Founder	Lecturer
1990	Theodore Bissell	W. Louis Tedders, Jr.
1991	Horace O. Lund	Preston E. Hunter
1992	Hamlin H. Tippins	Wayne A. Gardner
1993	U. Eugene Brady, Jr.	C. Wayne Berisford
1994	Cedric R. Jordan	T. Don Canerday
1995	Clifford M. Beckham	Herbert Womack
1996	Oliver I. Snapp, Sr.	Carroll E. Yonce
1997	T. Don Canerday	Max H. Bass
1998	Loy W. Morgan	Max H. Bass
1999	William F. Turner	Daniel L. Horton
2000	Preston E. Hunter	Raymond Noblet
2001	Harry O. Yates, III	James L. Hanula
2002	Alton N. Sparks	Beverly Sparks
2003	James H. Oliver, Jr.	Richard L. Osburn
2004	Sturgis McKeever	Frank E. French
2005	Herbert H. Ross	J. Bruce Wallace
2006	Gary A. Herzog	Max H. Bass
2007	Jerry A. Payne	Ted E. Cottrell
2008	W. Louis Tedders, Jr.	Russell F. Mizell, III
2009	Ronald D. Oetting	Wayne A. Gardner
2010	Frank E. French	Daniel V. Hagan
2011	Keith Griffith	Lance Peterson
2012	John N. All	James D. Dutcher
2013	Wayne A. Gardner	G. David Buntin



FELLOW • 2013
Tracie M. Jenkins



Tracie M. Jenkins is by inclination and the nature of her work a collaborator. She is currently an Associate Professor of Applied Insect Genetics at the University of Georgia, College of Agricultural and Environmental Sciences in Griffin, GA with responsibilities in Research (50%) and Teaching (50%). Tracie received her B. S. in Biology in 1968 from the University of Tennessee, Chattanooga, a degree in Medical Technology, MT(ASCP), in 1969 from Georgia State University and an M.S. degree in biology from Northwestern State University in Louisiana in 1972. Her master's work, under the guidance of Dr. Tom Burns, began her interest in using molecular markers for hypothesis testing, although her subjects for her masters were reptiles instead of insects. Tracie was graduated with her Ph.D. in genetics from the University of Georgia in 1993. Her Ph.D. research on *Drosophila pseudoobscura* (Diptera: Drosophilidae) guided by Dr. Wyatt W. Anderson was significant for two reasons. First, the results produced strong inference that selection on the *D. pseudoobscura* mitochondrial DNA (mtDNA) and not a *Wolbachia* symbiosis was responsible for an increase in specific mtDNA haplotypes; and it showed that the age of the *D. pseudoobscura* population in Colombia was younger than suggested by previous research. Second, questions related to microevolution pursued in a collaborative, collegial atmosphere became Tracie's major passion. In 1996 after teaching at Mercer University and research at Mercer University Medical School, Tracie was able to pursue her passion when she accepted a postdoctoral position with Dr. Brian T. Forschler, who wanted to apply DNA marker technology to questions related to subterranean termite (Rhinotermitidae) population biology. Her collaborative genetics work with Dr. Forschler illuminated natural history phenomenon contrary to over 50 years of literature. Maternal DNA markers showed that some subterranean termite colonies in Georgia were polygyne. These markers also revealed that subterranean termite species are not nest-specific; one species may leave a nest site only to have a second species move in. Her population genetics work with Dr. Forschler continued when she became a Research Scientist in the UGA Entomology Department, Griffin Campus, in 2000. The major emphasis of her work shifted to the phylogeography of invasive species. Collaboration with colleagues in United Kingdom resulted in uncovering the sources of *Reticulitermes lucifugus grassei* introduced into Devon in wine crates from Bordeaux and/or plants from northern Spain. Both of these ports of entry were plugged. Serendipitously it also showed that *R. santonensis* of Europe and *R. flavipes* of the United States were the same species. *Reticulitermes flavipes* was likely introduced into Europe by trade at least a century ago. Her work with Formosan termite infestations in Atlanta showed that the likely source



of introduction was railroad ties taken off grade in New Orleans, shipped into Atlanta on trucks, and then used for landscaping. Tracie became a tenured-track faculty member in 2005 and was promoted to Associate Professor in 2011. The present focus of her research is the population genetics of the kudzu bug, *Megacopta cribraria*. During her tenure at UGA Tracie has generated over \$680,000 from grants and gifts. As the result of her collaborations with colleagues on UGA's Griffin, Tifton and Athens campuses, in the USDA in Griffin and Byron, at other universities in the U.S. and at Universities in Europe, Australia, and Asia, she has worked with species in several insect families. Tracie is published in 28 peer-reviewed journals and has a three-year collaborative population genetics study of the kudzu bug in review. She has 18 Proceeding publications and given 99 presentations. Since 2005, Tracie has reviewed two Genetics textbooks, over 20 journal manuscripts, six grants and has been an outside reviewer for a thesis by J. P. Hereward, The University of Queensland, Australia. Tracie has also supervised a Master's student, been an Advisory Committee Member for five Ph.D. students, and the undergraduate research advisor for six students. As part of her teaching responsibilities Tracie developed and taught courses in Genetics, Evolutionary Genetics, and Undergraduate Research in Insect Genetics. She also team-taught General Entomology (ENTO 4000). Tracie has participated in directed study programs for students on the UGA Griffin campus each year since 2005. For the Griffin campus she designed, monitored the construction of, and got equipment for an undergraduate student genetics lab, advised all the CAES biology majors, developed a long-distance General Genetics course specifically for the UGA Griffin and Tifton campuses, and served on the Curriculum Committee. Tracie considers herself extremely fortunate in her colleagues, collaborators and students.



FELLOW • 2013

S. Kristine Braman

Kris Braman currently is a Professor of Entomology and Director of the Center for Urban Agriculture at the University of Georgia Griffin Campus of the College of Agricultural and Environmental Sciences in Griffin, GA. Her current duties include research (61%), extension (26%), and instruction (13%) for Integrated Pest Management of turf and ornamental

crops. Kris received her B.S. in 1978 in Forest Biology from SUNY College of Environmental Science and Forestry and Syracuse University. Her Ph.D. in Entomology under the direction of Dr. Ken Yeorgan was awarded in 1987 from the University of Kentucky, where she worked on biological control of soybean insect pests. Her dissertation work focused on the biology and ecology of predaceous damsel bugs.

She began work at the University of Georgia in 1989. Her research focus is on the ecology and management of insect pests of turf and ornamental plants.



Her studies blend basic and applied components to improve the sustainability and profitability of urban plant production and landscape pest management. Research emphasizes two areas: Identifying and increasing the use of pest-resistant and adapted turf and ornamentals and- Integrating natural enemies and alternative control technologies into IPM through enhanced understanding of tritrophic interactions in urban plant systems. Recent work has addressed management of invasive and emerging plant pests. Dr. Braman has produced, with her students, over 200 publications including 111-refereed articles. As Director of the Center for Urban Agriculture from 2011-present, she provides leadership in delivery of science- based information to stakeholder groups. The Center mission includes urban county agent program planning and training, professional proficiency certification, World Wide Web educational programming and support, regional educational programming and related grant management.

She has taught and contributed to team-taught courses in courses in Turfgrass Pest Management, General Entomology and Biological Control. She is a recipient of the Distinguished Achievement Award in Horticultural Entomology, SEB/ESA and was recognized as Distinguished Alum of the Entomology Department at the University of Kentucky. Dr. Braman belongs to several professional societies including the Entomological Society of America, Georgia Entomological Society, and the Ecological Society of America. She has served the Georgia Entomological Society as member or chair of several committees and was GES President in 2008. She also has served on several committees with the Entomological Society of America at the branch and national level and served as the 2010 President of the Southeastern Branch of ESA. She currently serves as a member of the Editorial Board for the Journal of Environmental Horticulture.

FELLOWS OF THE GEORGIA ENTOMOLOGICAL SOCIETY

1991	James H. Oliver, Jr	2006	Wayne Gardner
1992	Preston E. Hunter	2006	Lance Peterson
1993	Alton N. Sparks	2007	James Dutcher
1994	J. Bruce Wallace	2007	Keith Griffith
1995	Harry O. Yates, III	2008	John All
1998	Sturgis McKeever	2008	T. Don Canerday
2000	Rudolph T. Franklin	2009	William Tietjen
2001	W. Joe Lewis	2011	Beverly Sparks
2002	Richard B. Chalfant	2011	Robert McPherson
2003	Ronald D. Oetting	2012	G. David Buntin
2004	Frank E. French	2013	Kristine Braman
2005	C. Wayne Berisford	2013	Tracie Jenkins
2005	Daniel V. Hagan		



THURSDAY, 11 APRIL 2013

7:00 – 8:00 A.M. **Registration (Downstairs Lobby)**

Poster setup (Chestnut Oak Room)

7:30 – 5:00 P.M. **Presentation previews (By arrangement w/Ron Oetting)**

8:30 – 5:00 P.M. **Poster Displays (Chestnut Oak Room)**

Opening Session

RED AND WHITE OAK ROOMS • PRESIDENT ALAN HARVEY, PRESIDING

8:00 – 8:15 a.m. Welcome and Announcements

8:15 – 8:45 A.M. GES 2012 Founders Lecture honoring **Wayne Gardner**,
presented by **David Buntin**

8:45 – 9:00 A.M. Recognition of 2013 GES Fellows
By Ted Cottrell

9:00 – 9:45 A.M. Industry Panel
Moderator: Glenn Hammes (DuPont)

9:45 - 10:00 A.M. Break

10:00 A.M. – NOON **Symposium – “Industry: Your Partner in Seeking and Providing Solutions for Management of Destructive and Annoying Insect Pests”**

10:00 – 10:10 A.M. Introduction: **Gerald Harrison** (Amvac Chemical Corporation, Tifton, GA)

10:10 A.M. “From Lab to Label: How Products get to the Marketplace”. **Caydee Savinelli** (Syngenta Crop Protection LLC, Greensboro, NC)

10:30 A.M. “Synthetic Pyrethroids: Past and Present.” **Henry R. Mitchell** (FMC Corporation, Louisville, MS)

10:50 A.M. “Neonicotinoids: History, Overview and Utility of a Fascinating Chemical Class”. **John Bell** (Bayer CropScience, Research Triangle Park, NC)

11:10 A.M. “Insect Growth Regulators and IPM Partnership in Insect Control”. **Keith Griffith** (Chemtura AgroSolutions, Orlando, FL)

11:30 A.M. “The Development, Deployment and Impact of Bt Technologies in Crop Agriculture”. **Walt Mullins** (Bayer CropScience, Collierville, TN)

11:50 A.M. Q&A for all speakers.

NOON - 1:15 P.M. Luncheon Buffet (Foyer and Meeting Room)

Photo Salon (Back of Meeting Room)

Moderator: Lisa Ames



THURSDAY, 11 APRIL 2013

B.S./M.S. Student Paper Competition

RED AND WHITE OAK ROOMS • MODERATOR: MICHAEL TOEWS

- 1:15 P.M. Effect of lure and trap color on capture of lady beetles. **Emily Kemp**¹ and Ted Cottrell². ¹Wesleyan College, Macon, GA and ²USDA, ARS, Southeastern Fruit and Nut Tree Research Laboratory, Byron, GA.
- 1:25 P.M. Investigating the indirect effects of guppy introduction on populations of a shredding caddisfly, *Phylloicus hansonii* (Trichoptera: Calamoceratidae) in Trinidadian streams. **Kelly Murray**, Troy Simon and Catherine Pringle. Department of Entomology and Odum School of Ecology, University of Georgia, Athens, GA.
- 1:35 P.M. Distinguishing *Dermacentor* Ticks using a COI Barcode. **Ashlin W. Reid**. Department of Biology, Georgia Southern University, Statesboro, GA.
- 1:45 P.M. Assessing the Establishment of Predatory Beetles Released to Control the Invasive Woolly Adelgid. **Cera E. Jones**, Department of Entomology, University of Georgia, Athens, GA.
- 1:55 P.M. Hosts of Mosquito Vectors Associated with Eastern Equine Encephalitis Virus Foci in Georgia. **Kelly E. Dabney**. Department of Biology, Georgia Southern University, Statesboro, GA.
- 2:05 P.M. Phenology of a Relict Population of *Wyeomyia smithii* (Diptera: Culicidae) in Tatnall Co., Georgia. **Rachel Morreale**. Department of Biology, Georgia Southern University, Statesboro, GA
- 2:15 P.M. The potential of neonicotinoids in controlling brown marmorated stink bug in vegetables. **John D. Aigner** and Thomas Kuhar. Department of Entomology, Virginia Tech, Blacksburg, VA.
- 2:25 P.M. Exotic mutualisms: Tending of extrafloral nectaries by the invasive *Brachymyrmex patagonicus* (rover ants) reduces seed damage in the invasive *Richardia scabra* (rough Mexican clover). **Bradley Corbin** (undergraduate) and Alan W. Harvey. Department of Biology, Georgia Southern University, Statesboro, GA.
- 2:35 P.M. Responses of Bark and Wood-boring Beetles to Host Attractants in Hemlock-dominated Forests. **Courtney L. Brissey**, David Coyle, Angela Mech and Kamal Gandhi. Warnell School of Forestry and Natural Resources, UGA, Athens, GA.
- 2:45 P.M. Efficacy of new insecticides in the management of thrips and tomato spotted wilt virus of peanut. **Kathleen Marasigan**¹, Michael Toews¹, Robert Kemerait² and Rajagopalbabu Srinivasan¹. ¹Department of Entomology and ²Department of Plant Pathology, University of Georgia, Tifton, GA.



2:55 P.M. Host preference of *Megacocta cribraria* (Hemiptera: Plataspidae) on selected edible bean crops and soybean. **Joni Blount**¹, David Buntin¹ and Stormy Sparks². ¹Department of Entomology, University of Georgia, Griffin, GA and ²Department of Entomology, University of Georgia, Tifton, GA.

3:05-3:30 P.M. **Break**

Ph.D. Student Paper Competition

RED AND WHITE OAK ROOMS • MODERATOR: PHILLIP ROBERTS

- 3:30 P.M. Georgia Summer Temperatures: A Natural Enemy of the Hemlock Woolly Adelgid. **Angela M. Mech**¹, Robert Teskey¹, Rusty Rhea² and Kamal Gandhi¹. ¹Warnell School of Forestry and Natural Resources, University of Georgia, Athens, GA and ²USDA Forest Service, Forest Health Protection, Asheville, NC.
- 3:40 P.M. Second generation peanut genotypes resistant to thrips-transmitted Tomato spotted wilt virus exhibit tolerance rather than true resistance and differentially affect thrips fitness. **Anita Shrestha**. Department of Entomology, UGA, Athens, GA
- 3:50 P.M. Improving management of cereal leaf beetle (*Quiema melanopus*) using degree-days and mobile apps. **Christopher R. Philips**¹, Ames Herbert¹, Thomas Kuhar¹ and Dominic Reisig². ¹Department of Entomology, Virginia Tech, Blacksburg, VA and ²Department of Entomology, NCSU, Plymouth, NC.

Contributed paper session

RED AND WHITE OAK ROOMS • MODERATOR: BILL IRBY

- 4:00 P.M. The Asian plataspid which took the West: *Megacocta cribraria* population structure over three years of expansion in the Western Hemisphere. **Tracie Jenkins**¹, Tyler Eaton¹, Joe Eager², Daniel Suiter¹, Wayne Gardner¹, David Buntin¹, Phillip Roberts³, John Ruberson⁵, Michael Toews³, Alton Sparks³ and Jeremy Greene⁴. ¹Department of Entomology, University of Georgia, Griffin, GA, ²Dow AgroSciences LLC, Tampa, FL, ³Department of Entomology, University of Georgia, Tifton, GA, ⁴Clemson University Edisto REC, Blackville, SC, ⁵Department of Entomology, Kansas State University, Manhattan, KS.
- 4:10 P.M. Will the Kudzu Bug, *Megacocta cribraria*, be a pest of beans and peas? **Alton N. Sparks, Jr.**¹, Joni Blount² and David Buntin². ¹Department of Entomology, University of Georgia, Tifton, GA and ²Department of Entomology, University of Georgia, Griffin, GA.
- 4:20 P.M. Kudzu Bug Threshold for Georgia Soybeans. **Phillip Roberts**¹, John All², David Buntin³, Mike Toews¹ and Wayne Gardner³. ¹Department of Entomology, University of Georgia, Tifton, GA, ²Department of Entomology, University of Georgia, Athens, GA, ³Department of Entomology, University of Georgia, Griffin, GA.



THURSDAY, 11 APRIL 2013

4:30 P.M. Management of brown marmorated stink bug in vegetable crops.

Thomas Kuhar, John Aigner and Chris Philips. Department of Entomology, Virginia Tech, Blacksburg, VA.

4:40 P.M. Field trials with *Prionus* root borer pheromone. **Jim Dutcher**.

Department of Entomology, University of Georgia, Tifton, GA.

4:50 P.M. Chemical Ecology of the Catalpa Sphinx. **Evan Lampert** and Audrey Barrett. Biology Department, University of North Georgia, Oakwood, GA.

5:00 P.M. The effect of host plant resistance on acquisition and transmission of Tomato yellow leaf curl virus by whiteflies. **Rajagopalbabu Srinivasan**. David Ritchie, Stan Diffie and Alton Sparks. Department of Entomology, University of Georgia, Tifton, GA.

5:10 - 5:30 P.M. Student Awards Presentations

5:30 P.M. Adjourn

6:00 - 7:00 P.M. GES Mixer



FRIDAY, 12 APRIL 2013

7:00 – 8:00 A.M. **Registration**, Downstairs Lobby

7:30 – 11:00 A.M. **Presentation previews – by arrangement w/Ron Oetting**

7:30 – Noon **Poster Displays**, Chestnut Oak Room

7:30-8:00 A.M. **Authors at Posters**

Contributed Paper session

RED AND WHITE OAK ROOMS • MODERATOR: WILL HUDSON

- 8:00 A.M. Making Entomology Mobile with Distance Education and Social Media. **Marianne Shockley**. Department of Entomology, University of Georgia, Athens, GA.
- 8:10 A.M. Life underground: in-burrow behavior of the larvae of southeastern beach tiger beetles (*Cicindela dorsalis media*). **Alan Harvey**. Department of Biology, Georgia Southern University, Statesboro, GA.
- 8:20 A.M. The tick genus *Amblyomma* following its phylogeography through evolutionary times (preliminary data). **Lorenza Beati**. GSU-ICPS, Statesboro, GA.
- 8:30 A.M. Whitefly management in fall vegetable crops in Georgia. **David Riley**. Department of Entomology, University of Georgia, Tifton, GA.
- 8:40 A.M. Mating Disruption for Management of the Lesser Peachtree Borer. **Ted Cottrell**¹ and Dan Horton². ¹USDA, ARS, Southeastern Fruit and Nut Tree Research Laboratory, Byron, GA and ²Department of Entomology, University of Georgia, Athens, GA.
- 8:50 A.M. Ants of Brunswick, GA. **Daniel Suiter**¹ and Lloyd Davis². ¹Department of Entomology, University of Georgia, Griffin, GA and ²USDA-ARS (retired).
- 9:00 A.M. Insects and Death: The Case of “The Woman in the Box”. **Edward Mondor**¹ and Jared Akins². ¹Department of Biology, Georgia Southern University, Statesboro, GA and ²Bullock County Sheriff’s Office, Statesboro, GA.
- 9:10 A.M. A Review on the Ecology and Management of the Azalea Lace Bug. **Shakunthala Nair** and Kris Braman. Department of Entomology, University of Georgia, Griffin, GA.
- 9:20 A.M. Flea Beetle Management. **Kris Braman**¹ and Michelle Samuel-Foo². ¹Department of Entomology, University of Georgia, Griffin, GA and ²University of Florida, Gainesville, FL.

9:30-9:45 A.M. **Break**



Contributed Paper session (cont.)

MODERATOR: DAN SUITER

- 9:45 A.M. Aflatoxin mitigation using Bt cultivars and in-field identity preserve. **Michael D. Toews**¹ and David Buntin². ¹Department of Entomology, University of Georgia, Tifton, GA and ²Department of Entomology, University of Georgia, Griffin, GA.
- 9:55 A.M. Insect succession. **Mark Blackmore**¹ and Joyce Chan². ¹Department of Biology, Valdosta State University, Valdosta, GA and ²Department of Sociology, Anthropology & Criminal Justice, Valdosta State University, Valdosta, GA.
- 10:05 A.M. Butterfly Beauties and Dragonfly Damsels: A Review of Insect Themes in Art and Sculpture (1880-1920). **Linda A. Smyth**. Macon, GA.
- 10:15 A.M. Does Size Count? A Report on Moth Flight Activity in Clarke County. **Tori Staples**. Department of Entomology, University of Georgia, Athens, GA.
- 10:25 A.M. Field screening of maize germplasm lines for fall armyworm resistance using visual damage rating and predator abundance survey. **Xinzhi Ni**¹ and Matthew Krakowsky². ¹USDA-ARS Crop Genetics and Breeding Research Unit, University of Georgia, Athens, GA and ²USDA-ARS Plant Science Research Unit, North Carolina State University, Raleigh, NC.
- 10:35 A.M. Population genetics of the Plum Curculio, *Conotrachelus nenuphar* (Coleoptera: Curculionidae) symbiosis. **Tyler Eaton**¹, Ted Cottrell², Ann Amis², Dan Horton³, Diane Alston⁴ and Tracie Jenkins¹. ¹Department of Entomology, University of Georgia, Griffin, GA, ²USDA-ARS, SE Fruit and Nut Tree Research Laboratory, Byron, GA, ³Department of Entomology, University of Georgia, Athens, GA, and ⁴Department of Biology, Utah State University, Logan, UT.
- 10:45 A.M. Is Neonicotinoid Seed Treatment a Bullet Proof System for Bt Corn Against Seedling Pests? **John All**. Department of Entomology, University of Georgia, Athens, GA.

11:00 - 12:00 P.M. **Business Meeting**



Student Poster Competition

- SP-1 Comparative morphology of antennal sensillae of three disjunct populations of *Wyeomyia smithii* (Diptera: Culicidae). **Casey J. Wesselman**. Department of Entomology, University of Georgia, Athens, GA.
- SP-2 Scale Insect and Pathogen Complex Affecting Eastern White Pine. **Angela M. Mech**¹, David Coyle¹, Michelle Cram², Chris Asaro³ and Kamal Gandhi¹. ¹Warnell School of Forestry and Natural Resources, University of Georgia, ²USDA Forest Service, Southern Research Station, Athens, GA and ³Virginia Department of Forestry, Charlottesville, VA.
- SP-3 Strategies for extracting nucleic acids from hard ticks preserved in ethanol for 100+ years. **Kayla L. Perry**. Department of Biology, Georgia Southern University, Statesboro, GA.
- SP-4 Summer Survival of Aestivating *Laricibius*. **Cera E. Jones**. Department of Entomology, University of Georgia, Athens, GA.
- SP-5 The Effects of Elevated CO₂ Concentration on Phenotypic Plasticity in pea aphid, *Acyrthosiphon pisum*. **Ansleigh S. Banks**. Department of Biology, Georgia Southern University, Statesboro, GA.
- SP-6 The Effects of Scavenging on Insect Colonization of Infant-Sized Remains. **Meagan N. Rowe**, Cody Simpson, Daniel Williams and Edward Mondor. Department of Biology, Georgia Southern University, Statesboro, GA.
- SP-7 Morphological Characteristics of *Ibalia leucospoides* Antennae, a Siricid Parasitoid. **Derek Robertson**¹, Brian Sullivan², William Shepard², James Meeker², Crawford Johnson² and Kamal Gandhi¹. ¹Warnell School of Forestry and Natural Resources, University of Georgia, Athens, GA and ²USDA Forest Service, Pineville, LA.
- SP-8 The Effect of Burial Depth on Insect Colonization Patterns. **Teneisha S. Jordan**, Edward Mondor and Daniel Williams. Department of Biology, Georgia Southern University, Statesboro, GA.
- SP-9 Management of Argentine ants (*Linepithema humile*) in Central Georgia. **Jacob Holloway**. Department of Entomology, University of Georgia, Athens, GA.
- SP-10 Impacts of Fire Regimes and Stand Composition in Subcortical Insects in Longleaf-dominated Forests. **Courtney L. Brisse**¹, Kamal Gandhi¹ and Lindsay Boring². ¹Warnell School of Forestry and Natural Resources and ²Jones Ecological Research Center, Newton, GA.
- SP-11 *Anomala plebeja* and *A. denuda* (Coleoptera: Scarabaeidae): two poorly known species of shining leaf chafers in Southern Togo (West Africa). **Brad K. Hounkpati**. Department of Entomology, University of Georgia, Athens, GA.



Regular Poster Displays

- DP-1 *Sipha maydis* (Hemiptera: Aphididae): A new record for the Eastern United States. **Lisa Ames**¹, David Buntin¹ and Susan Halbert². ¹Department of Entomology, University of Georgia, Griffin, GA and ²Division of Plant Industries, Florida Department of Agriculture and Consumer Services, Gainesville, FL.
- DP-2 Plant Salicylic Acid Biosynthesis and Metabolism Insecticidal Effect of Salicylic Acids and Similar Compounds on Argentine Ant (Hymenoptera: Formicidae). **Megan Babb**¹, Jennifer Marks¹, Jarvis Stephens¹, Stephen Roundtree¹, ChulHee Kang², Mark Brinkman¹ and Cathy Lee². ¹Gordon State College, Barnesville, GA and ²Washington State University.
- DP-3 *Diglyphus isaea* use in Leafminer IPM and compatible alternatives for the management of secondary pests on Gerbera daisies. **Monica L. Townsend**, Ron Oetting, S. K. Braman and C. M. Abraham. Department of Entomology, University of Georgia, Griffin, GA.
- DP-4 Exhibit A: Training law enforcement on how to collect entomological evidence. **Michelle N. Tremblay** and Edward Mondor. Department of Biology, Georgia Southern University, Statesboro, GA.



OFFICERS AND EXECUTIVE BOARD 2012-2013

President	Alan Harvey
President-Elect	Gerald Harrison
Past President	David G. Riley
Secretary-Treasurer	Stan Diffie
Historian	Nancy Hinkle

JOURNAL OF ENTOMOLOGICAL SCIENCE (UNTIL 2013 MEETING)

Editor	Wayne Gardner
Associate Editor	G. David Buntin
Business Manager	Susan Thornhill

2012-2013 LOCAL ARRANGEMENTS COMMITTEE

Ron Oetting (Chair)	Beverly Sparks
Bob McPherson	Mark Blackmore

PROGRAM COMMITTEE

Gerald Harrison (Chair)	Alan Harvey
Ron Oetting	Stan Diffie

INSECT SURVEY

Phillip Roberts (Chair)	Paul Guillebeau
Nancy Hinkle	

AWARDS AND RECOGNITION

Ted Cottrell (Chair)	Dan Horton
Xinzhi Ni	Keith Griffith

STUDENT AFFAIRS

Ed Mondor (Chair)	Kerry Oliver
Alexandra Dorfzaun	Alex Martinez

NOMINATIONS

Michael Toews (Chair)	Rosmarie Kelly
James "Shine" Taylor	

AUDIT

G. David Buntin (Chair)	S. Kristine Braman
--------------------------------	---------------------------

SITE SELECTION – 2014

Mark Blackmore (Chair)



GES SCHOLARSHIP

David Riley (Chair)
James Hadden

Ted Cottrell

O. I. SNAPP AWARD (NON-STUDENT PAPER)

Scott Horn (Chair)
Scott Harrison

Lisa Ames

T. L. BISSELL AWARD (M.S./B.S. STUDENT PAPER)

Dan Suiter (Chair)
Rajagopalbabu Srinivasan

Darold Batzer

C. M. BECKHAM AWARD (PH.D. STUDENT PAPER)

Lorenza Beati (Chair)
William Hudson

Tracie Jenkins

U. E. BRADY AWARD (STUDENT POSTER)

Bill Irby (Chair)
S. Kristine Braman

Alton "Stormy" Sparks

PHOTO SALON

Lisa Ames (Chair)
S. Kristine Braman

G. David Buntin

RESOLUTIONS

A. Ann Amis (Chair)

Ted Cottrell

INDUSTRY PANEL

Glenn Hammes (Chair)
James "Shine" Taylor

Jeff Smith

MEMBERSHIP AND COMPUTER RESOURCES COMMITTEE

Glynn Tillman (Chair)
Terry All

Keith Griffith

OPERATING GUIDELINES COMMITTEE

S. Kristine Braman (Chair)

SPORTING EVENTS (GOLF AND RUN/WALK)

Stormy Sparks, Golf
Phillip Roberts

John All, Run/Walk



PAST PRESIDENTS

- | | | | |
|------|-----------------------------|------|------------------------------|
| 1937 | C. H. Alden | 1977 | V. Rodney Coleman |
| 1938 | C. H. Alden | 1978 | R. H. Perstage |
| 1939 | Theodore L. Bissell | 1979 | R. B. Henderson |
| 1940 | P. M. Gilmer | 1980 | James O. Howell |
| 1941 | C. H. Alden | 1981 | Alton N. Sparks |
| 1942 | M. M. Murphy, Jr. | 1982 | U. Eugene Brady, Jr. |
| 1944 | P. W. Fatrtig | 1983 | R. F. Nash |
| 1946 | Oliver I. Snapp | 1984 | W. Louis Tedders, Jr. |
| 1948 | W. H. Clarke | 1985 | Herbert Womack |
| 1949 | Horace O. Lund | 1986 | J. B. O'Neil |
| 1950 | J. C. Alden | 1987 | J. Larry Zettler |
| 1951 | G. G. Rohwer | 1988 | James H. Oliver, Jr. |
| 1952 | W. G. Bruce | 1989 | Louise G. Henry |
| 1953 | William F. Turner | 1990 | William L. Tietjen |
| 1954 | W. E. Blassingame | 1991 | Jerry A. Payne |
| 1955 | F. E. Allison | 1992 | James R. Collins |
| 1956 | Cedric R. Jordan | 1993 | T. Don Canerday |
| 1957 | H. E. Johnson | 1994 | Michael A. Mullen |
| 1958 | Clifford M. Beckham | 1995 | Keith H. Griffith |
| 1959 | H. Laudani | 1996 | Frank E. French |
| 1960 | J. W. Maxwell | 1997 | Robert E. Lynch |
| 1961 | O. K. Fletcher, Jr. | 1998 | Sandy Newell |
| 1962 | W. W. Wells | 1999 | James D. Dutcher |
| 1963 | E. W. Beck | 2000 | James E. Carpenter |
| 1964 | Loy W. Morgan | 2001 | Lance G. Peterson |
| 1965 | H. H. Tippins | 2002 | Daniel V. Hagan |
| 1966 | H. L. Pollard | 2003 | James L. Hannula |
| 1967 | H. D. Purswell | 2004 | G. David Buntin |
| 1968 | J. W. Kilpatrick | 2005 | Wayne A. Gardner |
| 1969 | Preston E. Hunter | 2006 | Robert M. McPherson |
| 1970 | R. B. Comoly | 2007 | John N. All |
| 1971 | R. Davis | 2008 | S. Kristine Braman |
| 1972 | L. M. Redlinger | 2009 | John Ruberson |
| 1973 | J. B. O'Neil | 2010 | James Hadden |
| 1974 | Rudolph T. Franklin | 2011 | Ted Cottrell |
| 1975 | Horace O. Yates, III | 2012 | David Riley |
| 1976 | Jerry E. Payne, Sr. | 2013 | Alan Harvey |



PAST MEETINGS OF THE GES

Meeting Dates

Location

2 April 1937	Agricultural Experiment Station, Experiment
1 April 1938	Georgia Institute of Technology, Atlanta
28-30 Oct. 1938	Okefenokee Swamp, Fargo
6 May 1939	Georgia State College for Women, Milledgeville
14 October 1939	Agricultural Experiment Station, Experiment
6 April 1940	Emory University, Atlanta
7 November 1940	Agricultural Experiment Station, Experiment
5 April 1941	Wesleyan College, Macon
4 April 1942	Emory University, Atlanta
21 March 1944	Piedmont Hotel, Atlanta
29 March 1946	Agricultural Experiment Station, Experiment
10 April 1948	Baldwin Hall-UGA, Athens
30 April 1949	Jekyll Island Hotel, Jekyll Island
3-4 March 1950	American Legion, Fort Valley
9-10 March 1951	Abraham Baldwin Agricultural College, Tifton
7-8 March 1952	Savannah Hotel, Savannah
6-7 March 1953	Hotel Dempsey, Macon
12-13 March 1954	Ida Dunlap Little Library -UGA, Athens
4-5 March 1955	Radium Springs Hotel, Albany
8-9 March 1956	Manger Hotel, Savannah
19-20 March 1957	Rock Eagle 4-H Club Center, Eatonton
5-7 March 1958	King and Prince Hotel, St. Simons Island
4-5 March 1959	Radium Springs Hotel, Albany
30-31 March 1960	New Chemistry Building-UGA, Athens
8-9 March 1961	Wanderer Motel, Jekyll Island
20-22 March 1962	Radium Springs Hotel, Albany
20-22 March 1963	Holiday Inn, Pine Mountain
26-27 March 1964	Corsair Motel, Jekyll Island
9-11 March 1965	Downtown Holiday Inn, Atlanta
23-25 March 1966	Stuckey's Carriage Inn, Jekyll Island
21-23 March 1967	Manger Hotel, Savannah
19-21 March 1968	Elks Club, Albany
18-20 March 1969	Stuckey's Carriage Inn, Jekyll
17-19 March 1970	Downtowner Motor Inn, Albany
16-18 March 1971	DeSoto Hilton, Savannah
15-17 March 1972	King and Prince Hotel, St. Simons Island
28-30 March 1973	Macon Hilton Hotel, Macon
13-15 March 1974	Holiday Inn, Athens
19-21 March 1975	King and Prince Hotel, St. Simons Island
17-19 March 1976*	DeSoto Hilton, Savannah



PAST MEETINGS OF THE GES

16-18 March 1977	Downtowner Motor Inn, Albany
15-17 March 1978	King and Prince Hotel, St. Simons Island
21-23 March 1979*	Quality Inn, Hilton Head Island, SC
19-21 March 1980	Ramada Inn West, Macon
18-19 March 1981	Rural Development Center, Tifton
24-26 March 1982	History Village Inn & Conference Center, Athens
23-25 March 1983	Downtowner Motor Inn, Albany
21-23 March 1984	Buccaneer Motor Lodge, Jekyll Island
20-22 March 1985	Rural Development Center, Tifton
24-26 March 1986*	Sheraton Resort & Country Club, Savannah
18-20 March 1987	Quality Inn- Buccaneer, Jekyll Island
23-25 March 1988	Georgia Southern Col., Statesboro
22-24 March 1989	Univ. of Georgia, Athens
28-30 March 1990	Unicoi Lodge & Conference Center, Helen
27-29 March 1991	Callaway Gardens, Pine Mountain
25-27 March 1992	Clarion Resort Buccaneer, Jekyll Island
24-26 March 1993	Georgia Center for Continuing Ed., Athens
23-25 March 1994*	Sheraton Charleston Hotel, Charleston, SC
29-31 March 1995	Merry Acres Motel, Albany
27-29 March 1996	Holiday Inn-Midtown, Savannah
16-17 April 1997	Unicoi State Park, Helen
16-17 April 1998	Buccaneer Motor Lodge, Jekyll Island
14-16 April 1999	Rural Development Center, Tifton
6-7 April 2000	Georgia Center for Continuing Education, Athens
4-6 April 2001*	Georgia Mountain Center, Gainesville
3-5 April 2002	Georgia Southern University, Statesboro
2-4 April 2003	Holiday Inn, Jekyll Island
31 March - 2 April 2004	Callaway Gardens, Pine Mountain
30 March - 1 April 2005	Georgia Center for Continuing Education, Athens
29-31 March 2006	Holiday Inn, Jekyll Island
16-18 May 2007	Georgia Center for Continuing Education, Athens
2-4 April 2008	Lake Blackshear Resort and Golf Club, Cordele
1-3 April 2009	The Ridges Hotel and Resort, Hiawassee
6-8 October, 2010*	Hickory Knob State Park, McCormick, SC
6-8 April 2011	Lake Blackshear Resort & Golf Club, Cordele
4-6 April 2012	Holiday Inn, Statesboro

*Joint meeting of the *Georgia Entomological Society* and the *South Carolina Entomological Society*



SPEAKER SCHEDULE

AIGNER, JOHN	THURSDAY, 11 APRIL	2:15 P.M.
BEATI, LORENZA	THURSDAY, 11 APRIL	8:20 A.M.
BELL, JOHN	THURSDAY, 11 APRIL	10:50 A.M.
BLACKMORE, MARK	FRIDAY, 12 APRIL	9:55 A.M.
BLOUNT, JONI	THURSDAY, 11 APRIL	2:55 P.M.
BRAMAN, KRIS	FRIDAY, 12 APRIL	9:20 A.M.
BRISSEY, COURTNEY	THURSDAY, 11 APRIL	2:35 P.M.
CORBIN, BRADLEY	THURSDAY, 11 APRIL	2:25 P.M.
COTTRELL, TED E.	FRIDAY, 12 APRIL	8:40 A.M.
DABNEY, KELLY	THURSDAY, 11 APRIL	1:55 P.M.
DUTCHER, JIM	THURSDAY, 11 APRIL	4:40 P.M.
EATON, TYLER	FRIDAY, 12 APRIL	10:35 A.M.
GRIFFITH, KEITH	THURSDAY, 11 APRIL	11:10 A.M.
HARVEY, ALAN W.	FRIDAY, 12 APRIL	8:10 A.M.
JENKINS, TRACIE M.	FRIDAY, 12 APRIL	4:00 P.M.
JONES, CERA	THURSDAY, 11 APRIL	1:45 P.M.
KEMP, EMILY	THURSDAY, 11 APRIL	1:15 P.M.
KUHAR, THOMAS	THURSDAY, 11 APRIL	4:30 P.M.
LAMPERT, EVAN	THURSDAY, 11 APRIL	4:50 P.M.
MARASIGAN, KATHLEEN	THURSDAY, 11 APRIL	2:45 P.M.
MECH, ANGELA	THURSDAY, 11 APRIL	3:30 P.M.
MITCHELL, HENRY	THURSDAY, 11 APRIL	10:30 A.M.
MONDOR, ED	THURSDAY, 11 APRIL	9:00 A.M.
MORREALE, RACHEL	THURSDAY, 11 APRIL	2:05 P.M.
MULLINS, WALT	THURSDAY, 11 APRIL	11:30 A.M.
MURRAY, KELLY	THURSDAY, 11 APRIL	1:25 P.M.
NAIR, SHAKUNTHALA	FRIDAY, 12 APRIL	9:10 A.M.
NI, XINZHI	FRIDAY, 12 APRIL	10:25 A.M.
PHILLIPS, CHRISTOPHER	THURSDAY, 11 APRIL	3:50 P.M.
REID, ASHLIN	THURSDAY, 11 APRIL	1:35 P.M.
RILEY, DAVID	FRIDAY, 12 APRIL	8:30 A.M.
ROBERTS, PHILLIP	THURSDAY, 11 APRIL	4:20 P.M.
SAVINELLI, CAYDEE	THURSDAY, 11 APRIL	10:10 A.M.
SHOCKLEY, MARIANNE	FRIDAY, 12 APRIL	8:00 A.M.
SHRESTHA, ANITA	THURSDAY, 11 APRIL	3:40 P.M.
SMITH, LINDA	FRIDAY, 12 APRIL	10:05 P.M.
SPARKS, JR., ALTON N.	THURSDAY, 11 APRIL	4:10 P.M.
SRINIVASAN R.	THURSDAY, 11 APRIL	5:00 P.M.
STAPLES, LORI	FRIDAY, 12 APRIL	10:15 A.M.
SUITER, DANIEL R.	FRIDAY, 12 APRIL	8:50 A.M.
TOEWS, MICHAEL D.	THURSDAY, 12 APRIL	9:45 A.M.



POSTER PRESENTERS

- Banks, Ansleigh Student Poster SP-5
- Brissey, Courtney Student Poster SP-10
- Holloway, Jacob Student Poster SP-9
- Houkpati, K. Student Poster SP-11
- Jones, Cera Student Poster SP-4
- Jordan, Teneisha Student Poster SP-8
- Mech, Angela Student Poster SP-2
- Perry, Kayla Student Poster SP-3
- Robertson, Derek Student Poster SP-7
- Rowe, Meagan Student Poster SP-6
- Wesselman, Casey Student Poster SP-1

REGULAR POSTER DISPLAYS

- Ames, Lisa M. Poster, DP-1
- Babb, Megan Poster, DP-2
- Townsend, Monica Poster, DP-3
- Tremblay, Michelle Poster, DP-4

Please be considerate of speakers and meeting participants – turn off the ringer on cell phones and pagers before entering the meeting rooms. Thank you!



Thanks to those who provided
support for our meeting:

BAYER CROPSCIENCE
SYNGENTA CROP PROTECTION
DOW AGROSCIENCES
VALENT USA CORPORATION
AMVAC CHEMICAL CORPORATION
DUPONT CROP PROTECTION
FMC CORPORATION
CHEMTURA AGROSOLUTIONS

Georgia Entomological Society

2013

